

# bestCode®



THE CLOSER YOU LOOK,  
THE BETTER **BESTCODE** LOOKS!

CLEAN  
start

Smart  
Fill

TruPoint

Code.  
Connect

One  
Touch

Code  
faster

SMART  
filter

Code  
protect

# NExT Series 8

Next generation marking and coding.

High speed. Non-contact. Continuous ink jet printing systems.

BestCode Industrial Marking and Coding Systems print best by, lot code, sell by, expiration codes and other identifying marks and codes on industrial and consumer goods to ensure product traceability.



A complete range of small and large character printing systems.

Series 8 systems print high speed, reliable marks and codes on a wide range of substrates, including plastic, glass, paper and more.

**81** Designed for basic, entry level applications printing 1 or 2 lines of text, barcodes and graphics. Typical applications mark and code 1 shift per day or less, 3-5 days per week – averaging 2,000 hour annual operation or less.

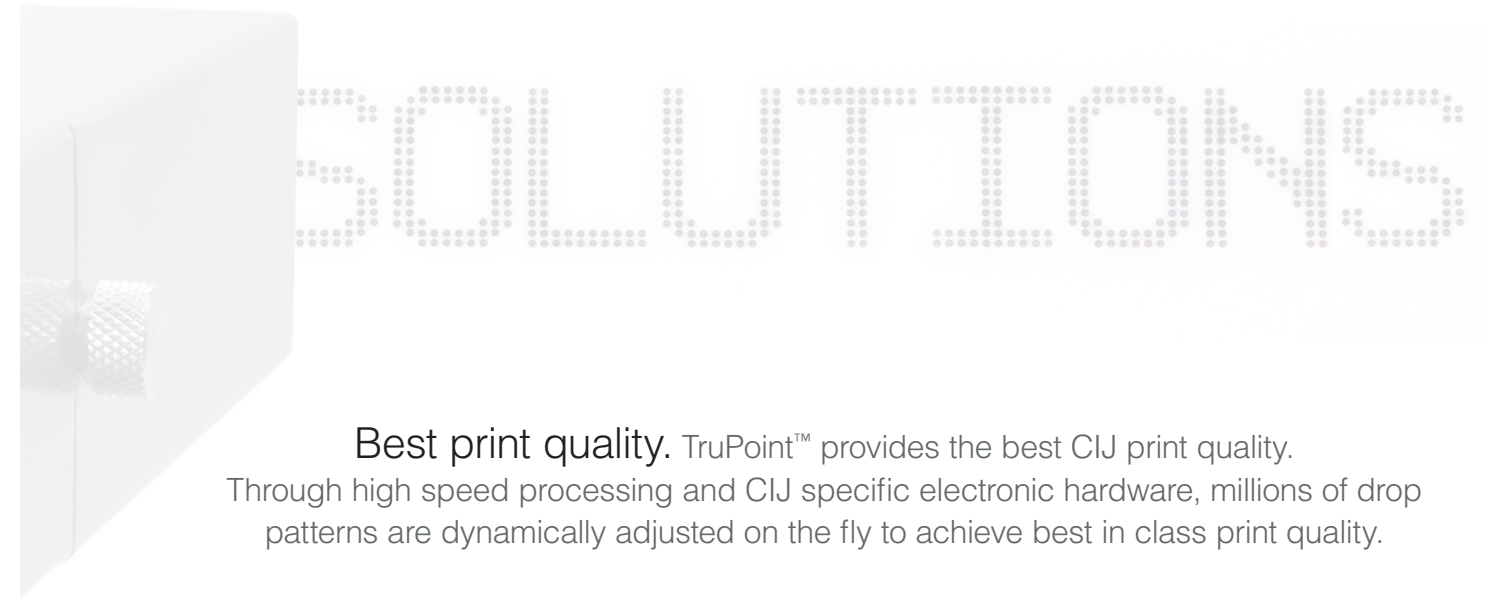
**82** Designed for basic applications printing 1 or 2 lines of text, barcodes and graphics. Typical applications mark and code 1 or 2 shifts per day, 5 days per week – 2,000 to 4,000 hour annual operation.

**86** Designed for high speed applications printing 1, 2, or 3 lines of text, barcode and graphics. Typical applications mark and code 1 or 2 shifts per day, 5 days per week – 3,000 to 5,000 hour annual operation, with high speed production line speeds.

**87** Designed for high speed applications printing 1, 2, 3, 4 or 5 lines of text, barcode and graphics. Typical applications mark and code 1 or 2 shifts per day, 5 days per week – 3,000 to 5,000 hour annual operation, with high speed production line speeds.

**88** Designed for high speed / high use applications, printing 1, 2, 3, 4 or 5 lines of text, barcode and graphics. Typical applications mark and code 2-3 shifts per day, 5-7 days per week – 6,000 to 9,000 hour annual operation, with higher speed production line speeds.

**88S** Model 88S Specialized Solution systems is a complete range of printing systems for unique applications and industries. These include the Model 88S Extreme, Model 88S Food Grade, Model 88S High Speed, Model 88S High Speed One, Model 88S Opaque, Model 88S Opaque High Speed, Model 88S Micro. See specific datasheets for more information.



**Best print quality.** TruPoint™ provides the best CIJ print quality. Through high speed processing and CIJ specific electronic hardware, millions of drop patterns are dynamically adjusted on the fly to achieve best in class print quality.

**True Non-Contact Printing.** Series 8 systems provide a true non-contact print operation. The ink is thrown from the printhead a minimum ink throw distance of .5" (12 mm) up to a maximum ink throw distance of 2" (50 mm) distances.

**Small and Large Character Marking and Coding.** Print marks and codes as small as .025" (.6 mm) – print on the edge of a toothpick or paperclip, and as large as .75" (19 mm) – print on the side of corrugated cases and other large character applications.

## Print anything. Mark and code everything.





## Series 8 printheads start clean every time.

BestCode's proprietary CleanStart™ technology automatically cleans the printhead eliminating daily and weekly cleanings. Series 8 printheads are industrial stainless steel, built-to-last for the harshest printing applications. Printheads are designed for a clean, pin-pointed start every time. Series 8 printheads are built around BestCode's proprietary micro-disk drop generator. An integrated valve provides Direct Solvent Injection for print-head nozzle and gutter cleaning. Jet Startup is ready to print in less than 1 minute.

**CLEAN**  
start

**1** minute

Ready to Print



### Broad Ink range.

A complete range of quick to immediate dry inks are offered to meet any marking and coding application. Inks available include MEK, Acetone, Ethanol, and Acetone/Ethanol blend based inks. Inks are available in a variety of colors with a library of specialty fluids for unique applications and specific industries. Can't find the solution – BestCode will formulate a solution for your application.



### Series 8 systems print fast.

Multiple machine types and multiple speed settings enable BestCode systems to achieve the fastest print applications. A single line of text can print at speeds exceeding 2,000 feet/minute (600 M/minute), two lines over 600 feet/minute (200 M/minute), three or four lines of print at 300 feet/minute (100 M/minute) – model dependent.



## Simplified, Extended Operation, Lower Cost of Ownership

Series 8 systems are simplified to allow anyone to operate, minimizing operator touches, extending time between human interaction. Routine operator functions are made less often.

### Clearer and simpler to operate.

A large, 10.4" Color Touch Display is always on, offering a vivid display with large intuitive buttons and status indicators. The Series 8 Display allows easy visual making full use of the color for status indicators.



### OneTouch™ Single Step.

Throughout the user interface, OneTouch™ single step operator functions are in use to reduce operator steps. A true WYSIWYG environment provides the most realistic view of creating your print message. Using "drag and drop" field based message, a graphical screen provides exacting location of your message design.

### AutoOff™ Go Home Button.

At the end of the day – press the AutoOff™ Go Home Button automating and eliminating time consuming end of day manual routines by automatically cleaning the printhead and powering the system off.

### Designed for the global market.

BestCode systems use multi-national character sets, featuring multiple languages and Unicode character printing – over 60,000 characters.

### No waste. Bottles drain completely

so you can print every drop. External fill fluid addition allows On-The-Fly Ink and Makeup Filling without opening enclosure. The large, clean, mistake proof intelligent one quart fluid containers are sized differently eliminating the risk of adding Makeup or Ink into the wrong tank, while extending time between fluid additions. The quart ink and solvent bottles know their fluid type, and shelf life.



## Industrial, Designed to the Extremes

Series 8 systems are designed for industrial extreme applications, engineered to the operating specification edges. Systems operate in wet/dry/dusty and hot/cold applications.

### Industrial, all metal, stainless steel enclosure.

The systems are "Built-to-Last" in a compact, lightweight space saving design. Operate in the most extreme wet and dry applications with an IP55, or IP65 rated enclosure for high dust. Series 8 enclosures are stainless steel 304 as standard and optional models are available using stainless steel 316.

### TempSense™ ventilation.

Using automatic detection systems, variable fan speed and highly efficient air flow, TempSense™ ensures the system operates in the correct temperature range. High volume air filters operate 12 months between service intervals.

**1000+** hours

Operational

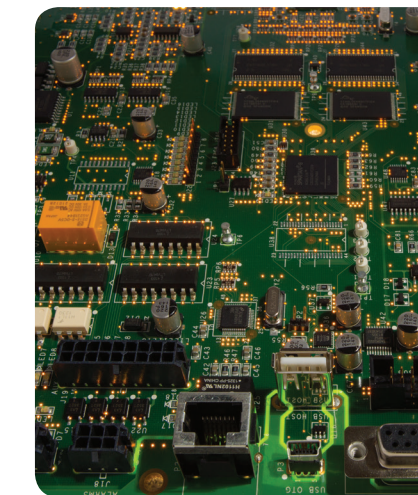


### LargeVolume™ ink and solvent tanks.

Extend time between fluid additions to weeks or months even in high volume, demanding print applications. Tanks hold multiple liters of fluids for extended run time. Ink tank volumes can operate multiple months between additions. Makeup tank volumes can operate 1000+ operational hours between additions.

### EcoTec™ fluid management system

reduces solvent consumption, lowering overall cost of ownership while extending the time between solvent additions and filter replacements.



### State-of-the-Art Electronics.

Systems feature high speed, state-of-the-art 260 Mhz processor core integrated into a single electronic board. Systems feature large memory storage, allowing multiple thousand messages to be stored for selection.



### Stay connected with CodeConnect.™

Integrated USB, RS232, multiple programmable inputs and outputs and optional Ethernet communications enable network connectivity allowing integration into any application. Use USB memory sticks to backup, restore, move, and carry system files wherever you go.



# NE<sup>XT</sup>Series8 Specifications

81

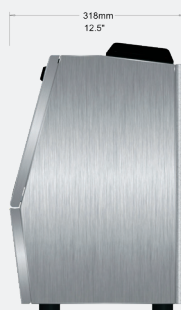
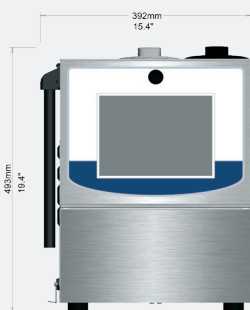
82

86

87

88/88S

Technology	Continuous Ink Jet (CIJ) Technology, Single Printhead Control				
User Interface	10.4" (264 mm) Color LCD, Touch Screen, Icon based - Graphical User Interface (GUI)				
Printing	Printhead Orientation - Omnidirectional				
Lines of Print	1-2 Lines, 16 pixel	1-2 Lines, 16 pixel	1-3 Lines, 25 pixel	1-5 Lines, 32 pixel	1-5 Lines, 32 pixel
Print Fonts	5, 7, 9, 12, 16	5, 7, 9, 12, 16	5, 7, 9, 12, 16, 19, 25	5, 7, 9, 12, 16, 19, 25, 32	5, 7, 9, 12, 16, 19, 25, 32
Adjustable Print Height	.10" (2 mm) - .75" (19 mm)	.06" (1.5 mm) - .75" (19 mm)	.06" (1.5 mm) - .75" (19 mm)	.06" (1.5 mm) - .75" (19 mm)	.06" (1.5 mm) - .75" (19 mm)
Print Speed	Up to 600 Feet/Minute (190 M/minute)	Up to 600 Feet/Minute (190 M/minute)	Up to 1300 Feet/Minute (397 M/minute)	Up to 1300 Feet/Minute (397 M/minute)	Up to 2000 Feet/Minute (600 M/minute)
Ink Throw Distance	.5" (12 mm) - 2" (50 mm)	.5" (12 mm) - 2" (50 mm)	.5" (12 mm) - 2" (50 mm)	.5" (12 mm) - 2" (50 mm)	.5" (12 mm) - 2" (50 mm)
Machine Interface	—	RS232	RS232	RS232	RS232, Ethernet
Inputs	1 Photocell, 1 Shaft Encoder	1 Photocell, 1 Photocell or Programmable Input, 1 Shaft Encoder, 8 Field Programmable Inputs (256 message select)			
Outputs	4 Alarm Outputs	4 Alarms Outputs, 1 Relay Output			
Enclosure	IP55 Stainless Steel Enclosure 304				IP65 Stainless Steel Enclosure 304, 316 option
SmartFilter™ Life	2,000 hours	2,000 hours	5,000 hours	5,000 hours	10,000 hours
Operating Environment	Temperature: 32° - 122° F (0° - 50° C), % Relative Humidity: 10 - 90% (non condensing)				
Electrical Requirements	Auto Ranging: 100 - 240 VAC (3 Amp), Frequency: 50 - 60 Hz, Power Consumption: 50 W				
Compliance	CE Certified, RoHS Compliant				
Messages / Operation Features	100 Messages	Dynamic Message Storage (over 1000 Messages), WYSIWYG Message Editing, Drag/Drop Field Based Formatting, Multi-National (Unicode) Character Printing, Real and Expiration Time and Date, Shift and Rollover Functions, Product and Batch Counting, Remote Count Resets, Graphic Printing, Continuous and Repeat Print, Auto Reverse/Traverse Print, Icon Based Operation, Single Button Start, Single Button Stop/Power Off, Password Security, Automatic Diagnostics, Error and Activity Logs, Service Reminders			
Operation Features	Icon Based Operation, Single Button Start, Single Button Stop/Power Off, Password Security, Automatic Diagnostics, Error and Activity Logs, Service Reminders, Backup / Restore Functions, USB Load Firmware Updates, All Operator Languages, Download Languages				
Ink Delivery	SmartFill™ Ink Bottle: 32 oz (946 ml), SmartFill™ Makeup Bottle: 32 oz (946 ml)				
Fluid Capacity	Ink Capacity: 68 oz (2 liter), Makeup Capacity: 102 oz (3 liters)				
Ink Types	Immediate FastDry™ Black	Quick Dry to Immediate, Complete Ink Range: MEK, Acetone, Ethanol, Blends and Food Grade in a broad range of colors			
Printhead Umbilical	10 Feet (3 Meter)	10 Feet (3 Meter) — Options: 15 feet (4.5 Meter), Right Angle Printhead			
Optional Accessories	Controller, Printhead Mounting, Alarm Beacon, Photocells, Shaft Encoder, AirFlow™ Positive Air Kit (for high dust), Printhead Wash Station				
Series 8 Specialized Solution Systems — Model 88S Options *See specific Series 8 Model datasheet for more details.					
Model 88S Extreme	Operate in high dust or wet environments with 316 Stainless enclosure and positive air for enclosure and printhead.				
Model 88S Food Grade	Print direct to food products with FDA and USDA compliant inks.				
Model 88S Micro	Print high resolution, micro sized characters at high print speeds — mark and code at .025" (.6 mm) — .4" (10 mm) image heights				
Model 88S High Speed	Print at speeds above 50,000 bottles per hour or over 1700 feet/minute (500 M/minute).				
Model 88S High Speed One	Print at speeds above 55,000 bottles per hour or over 2000 feet/minute (600 M/minute)				
Model 88S Opaque	Operate Heavy Pigment Inks for dark colored substrates.				
Model 88S Opaque High Speed	Print dark colored substrates (wire and cable) at print at speeds above 1700 feet/minute (500 M/minute).				



Weight: 45 lbs (20 kg)

By request, BestCode can adapt hardware, software and ink to meet specific application demands.

t. 817.349.8555 | f. 817.349.8480 | info@bestcode.co | www.bestcode.co

©2011-2017 BestCode. Designed and Manufactured by BestCode in Texas, USA  
BestCode and Continuous Innovations are trademarks of BestCode. BestCode reserves the right to change specifications without notice.

**bestCode**  
continuous innovations

